



Burners for gas, double stage, aluminium frame, protection cover with noise reduction plate, combustion head with adjustment at high efficiency and high flame stability.

Available in the versions Methane (natural gas) or L.P.G. (to specify at the order) on demand specific versions for town gas, coal gas or biogas.

Compact overall dimensions and disposition rationalized of the components with accessibility facilitated for the operations of setting and maintenance.

Gas train complete of working valve double stage with flow adjustment, safety valve, gas pressure switch, filter stabiliser of gas pressure, completely assembled, electrically linked and tested. Versions F with cover of protection in steel and specific features for the application on industrial ovens and bakery ovens.

Complete of connector 7 poles, flange and gasket for installation on boiler.

## TECHNICAL DATA

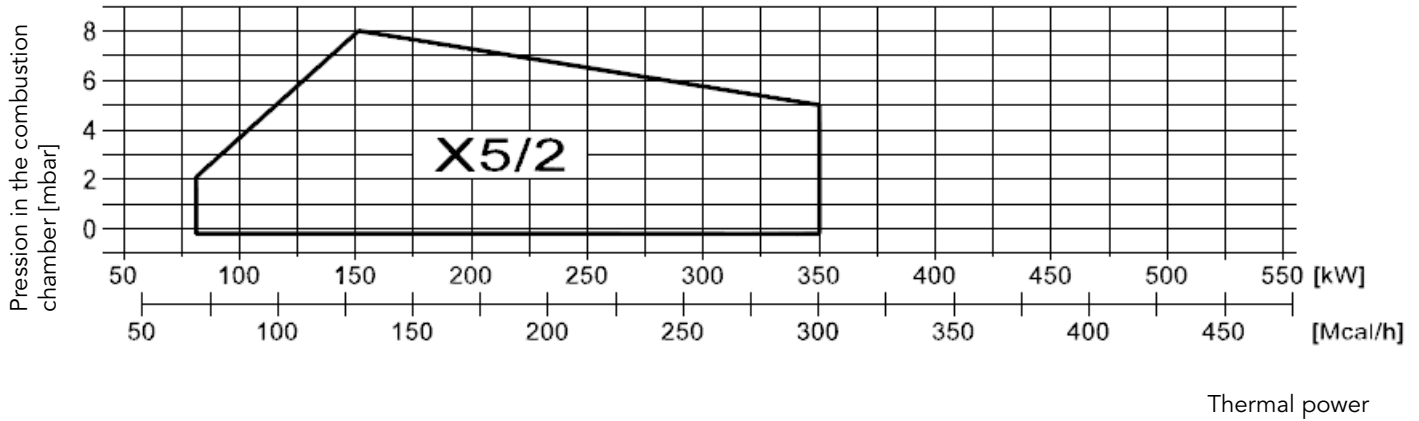
MODEL	GAS X5/2 CE	
Thermal power min-max*	Mcal/h	70/130-300
	kW	81,2/151-349
Flow-rate G20 (NATURAL GAS) min-max*	Nm <sup>3</sup> /h	8,2/15,2-35
Flow-rate G31 (LPG) min-max*	Nm <sup>3</sup> /h	3,2/5,8-13,5
Fuel	NATURAL GAS (second family) - LPG (third family)	
Combustible category	2R' 2H' 2L' 2E' 2E+ 2Er' 2ELL' 2E(R)B 38/P' 3+ 3P' 38' 3R	
Intermittent operation (min. 1 stop every 24 hours) at 2 stages		
Allowed environment conditions on running/stock	-15...+40°C/-20...+70°C, rel. humidity max 80%	
Maximum inlet pressure to the valves	°C	60
Min. pressure gas train D1"-S NATURAL GAS/LPG**	mbar	27/33
Min. pressure gas train D1"1/4-S NATURAL GAS/LPG**	mbar	16/25
Max pressure on the valve's inlet	mbar	360
Nominal electric power	kW	540
Fan motor	kW	370
Power absorbed	A	2,4
Power supply	1/N ~230V-50Hz	
Degree of electric protection	IP40	
Noisiness***min-max	dB(A)	67-71
Weight****	kg	24

\* Reference conditions: Room temperature 20°C - Atmospheric pressure 1013 mbars - Altitude 0m (sea level)

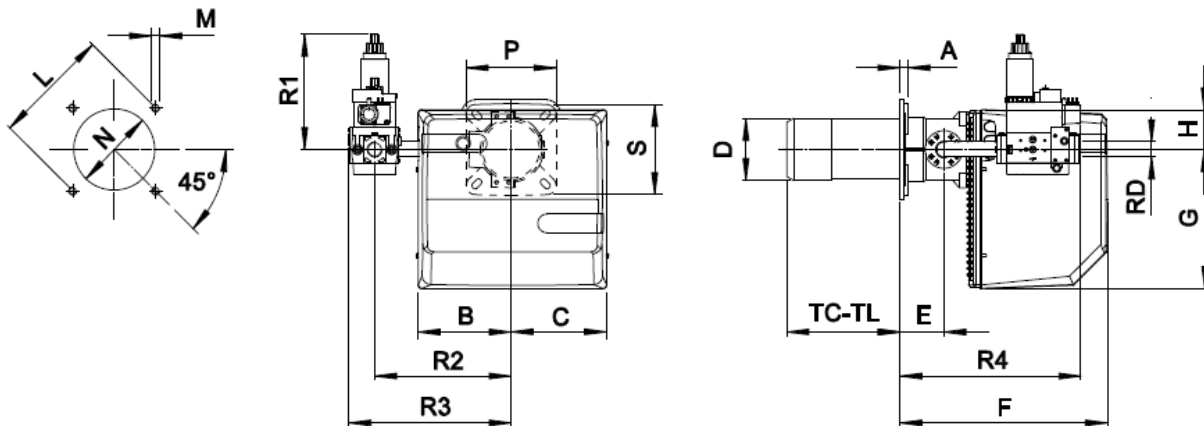
\*\* Least pressure of feeding of the gas to the train to get the maximum power of the burner considering against pressure in chamber of value combustion 0 (zero)

\*\*\* Measured sonorous pressure in the laboratory combustion, with functional burner on beta boiler to 1 m of distance (UNI EN ISO 3746 law)

### FIRING RATES: Thermal power - Pressure in combustion chamber



### DIMENSIONS (mm)



\* Recommended diameter of hole on the boiler

MODEL	A	B	C	D	E	F	G	H	L min	L max	M	N min	N *	N max	P	S	TC	TL	R1	R2	R3	R4	RD	Gas train weight
GAS X5/2 CE - D1"-S	18	207	213	138	98	462	310	90	205	226	M10	150	150	180	200	200	250	335	255	305	362	403	1"	7,5 kg
GAS X5/2 CE - CT D1"-S	18	207	213	138	98	462	310	90	205	226	M10	150	150	180	200	200	250	335	255	305	480	403	1"	80kg
GAS X5/2 CE - D1"1/4-S	18	207	213	138	98	462	310	90	205	226	M10	150	150	180	200	200	250	335	255	305	362	450	1"1/4	8 kg
GAS X5/2 CE - CT D1"1/4-S	18	207	213	138	98	462	310	90	205	226	M10	150	150	180	200	200	250	335	255	305	480	450	1"1/4	8,5 kg